



Product Catalogue 2014

Biomedical freezers and refrigeration

Scandinavian design and Ultimate performance technology

Less consumption – cleaner environment

ARCTIKO can meet any application between -164°C to +15°C. We are constantly innovating to reduce the energy consumption of our freezers. By using our patented single compressor system, you use 40-50% less energy. Our units have a lower heat dissipation than other products on the market, and therefore, you make significant savings on your air-conditioning bills too.

CO₂ Care

The climate changes are the cause of major concerns nowadays in the world, and the CO₂ emissions are the main factor of the global warming. If they are not reduced, the environment may suffer irreversible consequences. Everyone has to take more responsibility and make a difference. At ARCTIKO, we are dedicated in finding the most energy efficient systems to reduce your energy costs and also be responsible for the environment.



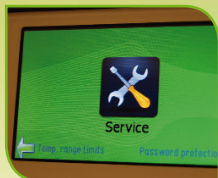
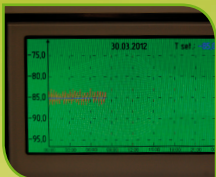
ISO certificates



NEW

Arctiko controller

At Arctiko we have the customer in mind when engineering new technologies. With the large temperature display and the most user friendly controls on the market, Arctiko has managed to turn simplicity into an art. With every possible alarm feature, integrated data logger, contact for remote monitoring, RS485/RS232 interface and USB read out, Arctiko has the smartest controller available, and of course, all these features come as standard on our units which are produced with the Arctiko controller.



CONTROLLER FEATURES

All standard features

- Micro processor controller with digital display
- Approx. 72 hours battery back up for alarms, loggings and temperature display in case of power cut
- Prepared for GSM alarm
- Prepared for connection of 2 additional probes
- Auto cycle in case of probe failure
- Ambient temperature display
- Direct download of logged data on USB memory stick
- Direct upload of new software via USB memory stick
- 3-level password protected
- Battery level indication
- Display text available in different languages
- Temperature graph

All data logging features

- Integrated data logger
- RS485/RS232 Interface
- Integrated memory for 30 years

All alarm features

- Visual and acoustic alarm
- Adjustable high/low temperature alarm
- Power failure alarm
- Probe failure alarm
- Instrument failure alarm
- Open door alarm
- Contact for remote alarm
- Shows all alarms

Cryogenic freezers

The cryogenic freezers offer a wide variety of research and long term storage applications, such as low temperature scientific experiments, preservation of cells, DNA, bone, bacteria, etc. With extreme cooling precision and its high tech microprocessor controller, this unit is the perfect cryogenic freezer for testing special material, ideal for hospitals, university laboratories, military industry or sanitation stations.



Features on ULTF 1400/1500

- Stainless steel interior
- 4 castors for easy handling
- Key lock on lid
- Sublids

Controller features

- Micro processor controller
- Acoustic and visual alarm
- Power failure alarm
- Adjustable high/low temperature alarm
- Open lid alarm
- Probe failure alarm
- Password protected
- Contact for remote alarm
- Temperature printer
- 72 hours battery back up for alarms, loggings and temperature display in case of power cut

Model	ULTF 1400	ULTF 1500
Dimensions exterior WxDxH (mm)	1590x890x1150	2085x890x1009
Capacity (L)	122	257
Temperature range (°C)	-164/-120	-152/-110
Power supply (V) / Frequency (Hz)	380 (3 phases) / 50/60	380 (3 phases) / 50/60

We reserve the right to change specifications without notice. Subject to confirmation, availability and errors.

Ultra low temperature upright freezers – double security



Arctiko is proud to present the true dual refrigeration system. By installing two separate cooling systems, this range adds a new dimension to your security. In the unlikely event that one system should fail, the freezer will still maintain -86°C until the problem is solved.

Features on ULUF 490/890

- Dual refrigeration system
- Insulated inner doors
- Castors
- Lock on door
- Ergonomic loading
- Heated door frame
- Heated vacuum valve
- 100% HCFC/CFC free

Controller features

- See page 3



Model	ULUF 490	ULUF 890
Dimensions exterior WxDxH (mm)	720x885x2089	1492x885x2089
Capacity (L)	393	786
Temperature range (°C)	-90/-40	-90/-40
Power supply (V) / Frequency (Hz)	230 / 50/60	230 / 50/60

We reserve the right to change specifications without notice. Subject to confirmation, availability and errors.



Ultra low temperature upright freezers

AVAILABLE
IN STAINLESS
STEEL

SINGLE
COMPRESSOR
TECHNOLOGY

-86°C

The ULUF -86°C range are products of our passion, striving after excellence when we offer the best in ultra low temperature freezing. Once again, we set new standards with the most user friendly controller in the market. All features such as alarms and data logging functions are always included as standard. This range consists of 9 different models starting from a volume of 7 L. up to 826 L. To facilitate the installation of your freezer, the ULUF 450 and ULUF 850 are now also available with an exterior height of only 2 meters. The ULUF -86°C series is produced with the true and original single compressor technology.

Features on ULUF -86°C range

- Low energy consumption
- Low noise level
- Low heat dissipation
- Insulated inner doors
- Castors and door key lock
- Ergonomic loading
- Heated door frame
- Heated vacuum valve
- 100% HCFC/CFC free
- Porthole for external temperature probes

Controller features

- See page 3



Model	ULUF 15	ULUF 65	ULUF 125	ULUF 450	ULUF 450-2M	ULUF 550	ULUF 750	ULUF 850	ULUF 850-2M
Dimensions exterior WxDxH (mm)	400x630x665	600x700x810	950x725x810	720x885x2089	720x885x1990	920x885x2089	1030x885x2089	1492x885x2089	1492x885x1990
Capacity (L)	7	54	106	413	393	585	680	826	786
Temperature range (°C)	-90/-40	-86/-40	-86/-40	-86/-40	-86/-40	-86/-40	-86/-40	-86/-40	-86/-40
Power supply (V) / Frequency (Hz)	230 / 50/60	230 / 50/60	230 / 50/60	230 / 50/60	230 / 50/60	230 / 50/60	230 / 50/60	230 / 50/60	230 / 50/60

We reserve the right to change specifications without notice. Subject to confirmation, availability and errors.

Ultra low temperature chest freezers



The ULTF range shows that high performance freezing with focus on low energy consumption is the future. The range has been updated with our advanced Arctiko controller which ensures that all alarm and data logging features are included as standard. The ULTF range is produced with the true and original single compressor technology which ensures the lowest noise level available.

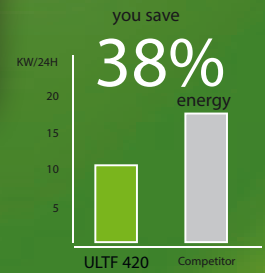
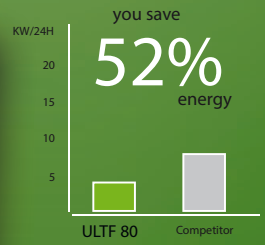


Features on ULTF range

- Single compressor
- Low energy consumption
- Low noise level (50 dBa)
- Low heat dissipation
- 100% HCFC/CFC free
- Sub lids
- Castors and key lock
- Porthole for external temperature probes

Controller features

- See page 3



Model	ULTF 80	ULTF 220	ULTF 320	ULTF 420
Dimensions exterior WxDxH (mm)	552x648x850	920x695x885	1262x698x885	1562x698x885
Capacity (L)	71	189	284	368
Temperature range (°C)	-86/-40	-86/-40	-86/-40	-86/-40
Power supply (V) / Frequency (Hz)	230 / 50/60	230 / 50/60	230 / 50/60	230 / 50/60

We reserve the right to change specifications without notice. Subject to confirmation, availability and errors.

Bench top freezer



MUF 40

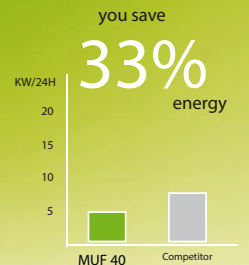
- Single compressor
- Low energy consumption
- Low noise level
- Low heat dissipation
- Key lock on door
- Shelf
- Feet
- Door key lock

Controller features

- Digital display
- Approx. 48 hours battery back up for alarms and temperature display in case of power cut
- Visual and acoustic alarms
- High/low temp. alarm
- Power failure alarm
- Contact for remote alarm



The MUF 40 can be used both as an bench top and under counter model. It features a compact design and low noise level making it a perfect storage solution in your laboratory.



Low temperature chest freezers



As a synonym for security, the LTF and LTFE range ensure reliable low temperature freezing and high temperature uniformity. Digital display, alarms, contact for remote alarm and castors are some of the standard features.



- LTF/LTFE range**
- Single compressor
 - Low energy consumption
 - Low noise level
 - 100% HCFC/CFC free
 - Key lock, castors and baskets
- Controller features**
- Digital display
 - Visual and acoustic alarm
 - Adjustable high/low temperature alarm
 - Contact for remote alarm
 - Probe failure alarm

Model	LTF 85	LTF 225	LTF 325	LTF 425	LTF 535
Dimensions exterior WxDxH (mm)	552x648x850	720x695x885	1262x698x885	1562x698x885	1662x758x890
Capacity (L)	71	133	284	368	476
Temperature range (°C)	-60/-30	-60/-30	-60/-30	-60/-30	-60/-30
Power supply (V) / Frequency (Hz)	230 / 50/60	230 / 50/60	230 / 50/60	230 / 50/60	230 / 50/60

Model	LTFE 140	LTFE 290	LTFE 370	LTFE 515
Dimensions exterior WxDxH (mm)	722x698x885	1262x698x885	1562x698x885	1662x758x890
Capacity (L)	130	284	368	476
Temperature range (°C)	-45/-10	-45/-10	-45/-10	-45/-10
Power supply (V) / Frequency (Hz)	230 / 50/60	230 / 50/60	230 / 50/60	230 / 50/60

We reserve the right to change specifications without notice. Subject to confirmation, availability and errors.

Portable -80°C freezer

Keep your eyes on what's important. The DP-80 ensures direct access to your samples at your desk. The Cryo Porter is based on stirling technology which means, no compressor, nor refrigerant. This makes it the most environmentally safe product in the Arctiko range.

REMEMBER THE ALUMINIUM BLOCK



- DP-80 cryo porter**
- Aluminium blocks for quick freezing of samples (must be ordered separately)
 - Digital controller
 - Simple & easy operation
 - Temp. stability +/- 0,2°C
 - Safety system for over current and high and low temperature
 - Adjustable high/low temperature alarm
 - AC (230V) and DC (12V) connection cables

Model	MUF 40	DP-80
Dimensions exterior WxDxH (mm)	495x660x680	230x262x390
Capacity (L)	35	1 alu. block
Temperature range (°C)	-80/-60	-80/0
Power supply (V) / Frequency (Hz)	230/110 / 50/60	12/100-240 / 50/60

We reserve the right to change specifications without notice. Subject to confirmation, availability and errors.

- ALUMINIUM BLOCKS:**
- (DAI 1421) DPB-0296: 96 wells for PCR-tubes 0,2 ml (Ø: 0,6 mm)
 - (DAI 1422) DPB-0548: 48 wells for PCR-tubes 0,5 ml (Ø: 0,8 mm)
 - (DAI 1423) DPB-1548: 48 wells for Sample-tubes 1,5 ml (Ø: 11,0 mm)
 - (DAI 1424) DPB-1840: 40 wells for Vials, Cryotubes 1,8 ml (Ø: 12,8 mm)
 - (DAI 1425) DPB-2040: 40 wells, Cryotubes 2,0 ml (Ø: 10,8 mm)
 - (DAI 1427) DPB-0001: One large compartment

Low temperature upright freezers

The ULUF -40°C range are products of our passion, striving after excellence when we offer the best in low temperature freezing. Once again, we set new standards with the most user friendly controller in the market. All features such as alarms and data logging functions are always included as standard. The Arctiko ULUF -40°C range offers the highest temperature stability world wide!

AVAILABLE
IN STAINLESS
STEEL

-40°C

Features on ULUF -40°C range

- Low energy consumption
- Low noise level
- Low heat dissipation
- Insulated inner doors
- Castors and door key lock
- Ergonomic loading
- Heated door frame
- Heated vacuum valve
- 100% HCFC/CFC free
- Porthole for external temperature probes

Controller features

- See page 3

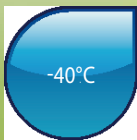


NEW

Model	ULUF 60	ULUF 120	ULUF 400	ULUF 500	ULUF 700	ULUF 800
Dimensions exterior WxDxH (mm)	600x700x810	950x725x810	720x885x2089	920x871x2089	1030x885x2089	1492x885x2089
Capacity (L)	54	106	413	585	680	826
Temperature range (°C)	-40/-20	-40/-20	-40/-20	-40/-20	-40/-20	-40/-20
Power supply (V) / Frequency (Hz)	230 / 50/60	230 / 50/60	230 / 50/60	230 / 50/60	230 / 50/60	230 / 50/60

We reserve the right to change specifications without notice.
Subject to confirmation, availability and errors.

Low temperature upright freezers



The UPLTF range is designed for easy access and reliable storage at low temperatures. Equipped with several alarms and all around sealed drawers, the UPLTF range are the obvious choice for anyone looking for a -40°C freezer.



- UPLTF 90 / 275**
- Digital display
 - High and low temperature alarm
 - Contact for remote alarm
 - Acoustic and visual alarm
 - Right hand hinged reversible door
 - Adjustable feet at front, and castors at back
 - Door key lock

Model	UPLTF 90	UPLTF 275
Dimensions exterior WxDxH (mm)	544x623x842	595x630x1760
Capacity (L)	92	246
Temperature range (°C)	-40/-10	-40/-10
Power supply (V) / Frequency (Hz)	230 / 50/60	230 / 50/60

We reserve the right to change specifications without notice. Subject to confirmation, availability and errors.



Biomedical freezers & Biomedical refrigerators

OPTIONAL SPARK FREE INTERIOR
Approved according to EN 60079-15
category 3, zone 2, CE EX 11-3 G



The Artiko biomedical line is produced with attention to details and is user friendly. The LF/LR range has many features which all come as standard and offers different sizes. No matter which product you choose, it is built after the same strict guidelines.



Features on LF/LR range

- White or stainless steel exterior
- Stainless steel interior
- Automatic door closing
- Air forced cooling
- Adjustable shelves
- Castors
- Key lock on door
- Reversible door

Controller features

- See page 3



NEW

NEW

NEW

NEW

Model	LF 100/LR 100	LR 270-2	LF 300/LR 300	LF 500/LR 500	LF 660-2/LR 660-2	LF 700/LR 700	LAF 700	LF 1400/LR 1400
Dimensions exterior WxDxH (mm)	610x659x790	520x700x1997	520x700x1997	620x860x1997	720x860x1997	720x860x1997	740x870x2017	1440x860x1997
Capacity (L)	94	161 / 161	346	515	288 / 288	618	618	1361
Temperature range (°C) LF range	-30/-10	-	-30/-10	-30/-10	-30/-10	-30/-10	-40/-10	-30/-10
Temperature range (°C) LR range	+1/+10	+1/+10	+1/+10	+1/+10	+1/+10	+1/+10	1	+1/+10
Power supply (V) / Frequency (Hz)	230 / 50/60	230 / 50/60	230 / 50/60	230 / 50/60	230 / 50/60	230 / 50/60	230 / 50/60	230 / 50/60

We reserve the right to change specifications without notice. Subject to confirmation, availability and errors.

Biomedical combi fridge/freezers

The LFF fridge/freezer range offers flexible storage at both positive and negative temperatures. The range is equipped with our advanced controller where all necessary features always come as standard and which is designed with focus on details and user friendliness. A new option is our LFFG models which features a glass door on the fridge section for a quick overview of the stored items.



AVAILABLE IN STAINLESS STEEL

-30/-10°C
+1/+10°C

- ### Features on LFF/LFFG range
- White or stainless steel exterior
 - Stainless steel interior
 - Automatic door closing
 - Air forced cooling
 - Adjustable shelves
 - Castors
 - Door key lock
 - Reversible door

Controller features

- See page 3



Model	LFF 270	LFF 660	LFFG 270	LFFG 660
Dimensions exterior WxDxH (mm)	520x700x1997	720x860x1997	520x700x1997	720x860x1997
Capacity (L)	161 / 161	288 / 288	161 / 161	288 / 288
Temperature range (°C)	+1/+10 -30/-10	+1/+10 -30/-10	+1/+10 -30/-10	+1/+10 -30/-10
Power supply (V) / Frequency (Hz)	230 / 50/60	230 / 50/60	230 / 50/60	230 / 50/60

We reserve the right to change specifications without notice. Subject to confirmation, availability and errors.

Biomedical glass door freezers & Biomedical glass door refrigerator

With class and outstanding cooling performance, the glass door refrigerators and freezers from Arctiko allow the best overview of the inside of the units. The advanced Arctiko controller ensures reliable temperatures and is equipped with many alarms which all come as standard.

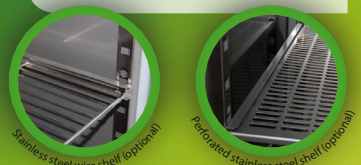
AVAILABLE IN STAINLESS STEEL

-23/-10°C
+1/+10°C

- ### Features on PF/PR range
- White or stainless steel exterior
 - Stainless steel interior
 - Automatic door closing
 - Air forced cooling
 - Adjustable shelves
 - Castors
 - Key lock on door
 - Reversible door
 - Glass door

Controller features

- See page 3



OPTIONAL SPARK FREE INTERIOR Approved according to EN 60079-15 category 3, zone 2, CE EX 11-3 G



Model	PF 100/PR 100	PF 300/PR 300	PF 500/PR 500	PF 700/PR 700	PF 1400/PR 1400
Dimensions exterior WxDxH (mm)	610x659x790	520x750x1997	620x860x1997	720x860x1997	1440x860x1997
Capacity (L)	94	352	523	628	1381
Temperature range (°C) PF range	-23/-10	-23/-10	-23/-10	-23/-10	-23/-10
Temperature range (°C) PR range	+1/+10	+1/+10	+1/+10	+1/+10	+1/+10
Power supply (V) / Frequency (Hz)	230 / 50/60	230 / 50/60	230 / 50/60	230 / 50/60	230 / 50/60

We reserve the right to change specifications without notice. Subject to confirmation, availability and errors.



Pharmacy refrigerator

The PR 360 pharmacy refrigerator is the perfect craftsmanship with our already well known multi feature controller and improved cooling performance. The PR360 represents the new generation in pharmacy storage.

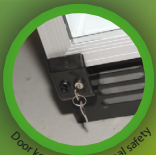


Features on PR 360

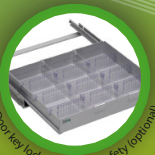
- Improved cooling performance
- Interior LED light
- Flexible shelf system
- Air forced cooling
- Key lock
- Glass door

Controller features

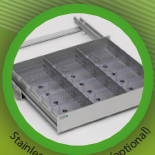
- See page 3



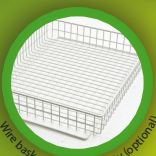
Door key lock for optimal safety



Door key lock for optimal safety (optional)



Stainless steel drawer (optional)



Wire basket with tip security (optional)



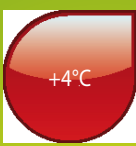
Advanced Arctiko controller

PR 360

Model	PR 360
Dimensions exterior WxDxH (mm)	595x595x2000
Capacity (L)	351
Temperature range (°C)	+2/+14
Power supply (V) / Frequency (Hz)	230 / 50/60

We reserve the right to change specifications without notice. Subject to confirmation, availability and errors.

Blood bank refrigerators & Blood bank refrigerators – double security



The Arctiko BBR range is a perfect combination of unique temperature uniformity and reliable technology. Experience the BBR models with advanced controller, integrated non-manipulative data logger with USB read out and chart recorder as standard.



Features on BBR/BBR-D range

- Dual refrigeration system (BBR-D models)
- Stainless steel interior
- White exterior
- Automatic door closing and key lock
- Air forced cooling
- Telescopic drawers
- Right hand hinged reversible door
- Castors
- Chart recorder

Controller features

- See page 3

BBR 100 / BBR 100-D



Stainless steel drawer



Reference container for reference temperature



Advanced Arctiko controller

Model	BBR 100/BBR 100-D	BBR 300/BBR 300-D	BBR 500/BBR 500-D	BBR 700/BBR 700-D	BBR 1400/BBR 1400-D
Dimensions exterior WxDxH (mm)	610x650x790	520x700x1997	620x860x1997	720x860x1997	1440x860x1997
Capacity (L)	94	352	523	628	1381
Temperature range (°C)	+4	+4	+4	+4	+4
Power supply (V) / Frequency (Hz)	230 / 50/60	230 / 50/60	230 / 50/60	230 / 50/60	230 / 50/60v

We reserve the right to change specifications without notice. Subject to confirmation, availability and errors.

PRODUCT OVERVIEW

-164/-152°C	-90°C	-86°C	-80°C	-60°C	-45°C	-40°C	-30°C	-23°C	+1/+10°C	+4°C
ULTF 1400 ULTF 1500	ULUF 15 ULUF 490 ULUF 890	ULTF 80 ULTF 220 ULTF 320 ULTF 420 ULUF 65 ULUF 125 ULUF 450 ULUF 450-2M ULUF 550 ULUF 750 ULUF 850 ULUF 850-2M	DP 80 MUF 40	LTF 85 LTF 225 LTF 325 LTF 425 LTF 535	LTFE 140 LTFE 290 LTFE 370 LTFE 515	LAF 700 ULUF 60 ULUF 120 ULUF 400 ULUF 500 ULUF 700 ULUF 800 UPLTF 90 UPLTF 275	LF 100 LF 300 LF 500 LF 660-2 LF 700 LF 1400	PF 100 PF 300 PF 500 PF 700 PF 1400	LR 100 LR 270-2 LR 300 LR 500 LR 660-2 LR 700 LR 1400 PR 100 PR 300 PR 360 PR 500 PR 700 PR 1400	BBR 100 BBR 300 BBR 500 BBR 700 BBR 1400 BBR 100-D BBR 300-D BBR 500-D BBR 700-D BBR 1400-D

ACCESSORIES

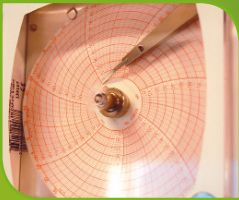
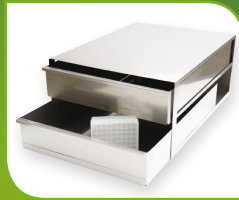


Chart recorder



Drawer system



GSM alarm module



CO₂ back up



Cryo gloves



SVS Voltage Stabilizers



Boxes



Racks

Distributor:



www.arctiko.com

Lammefjordsvej 5
DK-6715 Esbjerg N
Denmark
Tel. +45 7020 0328
Fax. +45 7020 0329
info@arctiko.com
www.arctiko.com